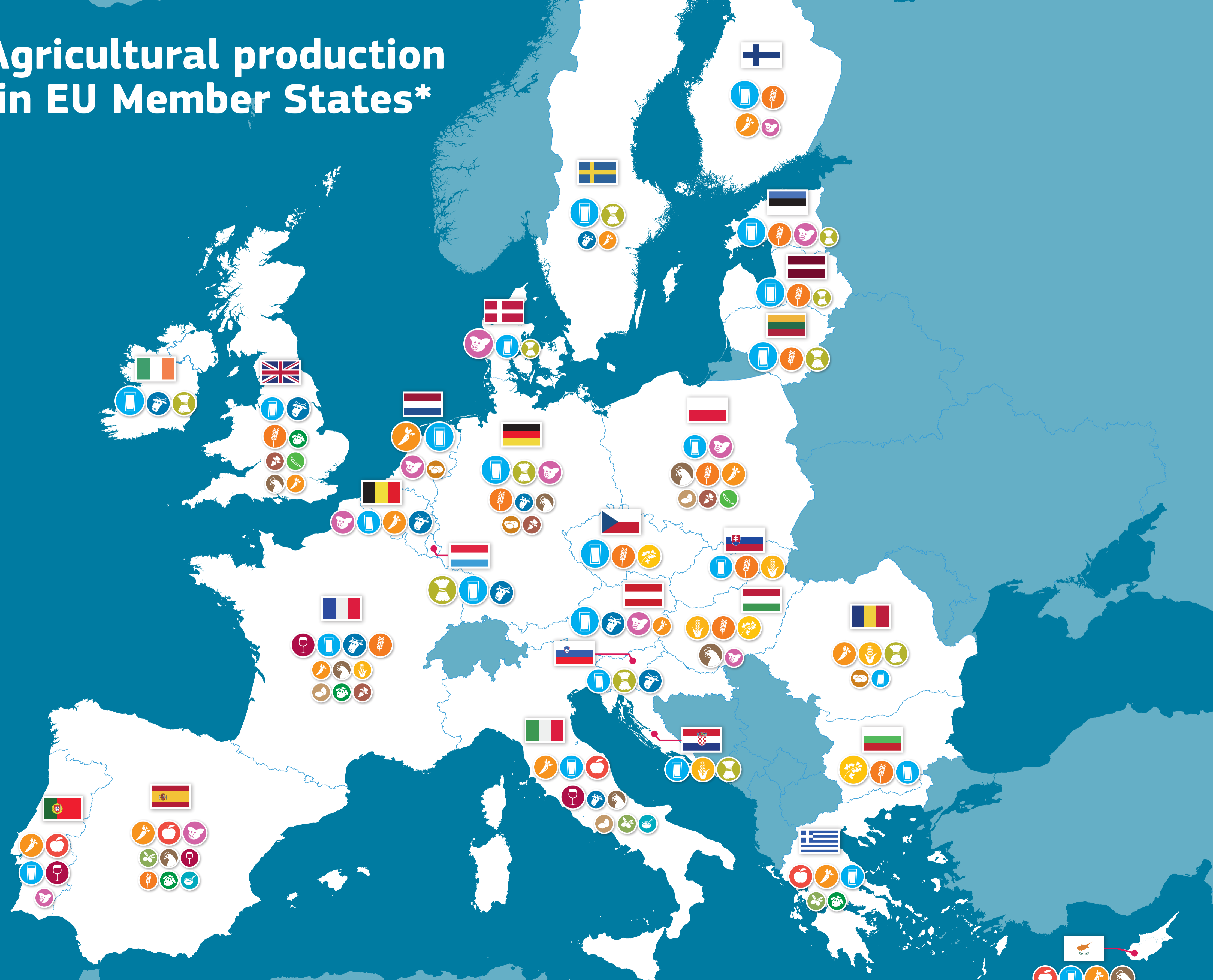


Agricultural production in EU Member States*

- Cereal 
 - Forage plants 
 - Fruits 
 - Maize 
 - Oil seeds 
 - Olive oil 
 - Potatoes 
 - Protein crops 
 - Rice 
 - Sugar beet 
 - Vegetables and horticultural products 
 - Wine 
 - Milk 
 - Cattle 
 - Sheep and goats 
 - Pigs 
 - Eggs 
 - Poultry 
-
- Percentage of national agricultural output
 - 0-10% 
 - 11-20% 
 - 21-50% 



	Austria 83 879 km ²
	Belgium 30 528 km ²
	Bulgaria 111 002 km ²
	Croatia 56 594 km ²
	Cyprus 9 251 km ²
	Czech Republic 78 867 km ²
	Denmark 42 921 km ²
	Estonia 45 227 km ²
	Finland 338 435 km ²
	France 632 833 km ²
	Germany 357 340 km ²
	Greece 131 957 km ²
	Hungary 93 024 km ²
	Ireland 69 797 km ²
	Italy 302 073 km ²
	Latvia 64 573 km ²
	Lithuania 65 300 km ²
	Luxembourg 2 586 km ²
	Malta 316 km ²
	Netherlands 41 540 km ²
	Poland 312 679 km ²
	Portugal 92 225 km ²
	Romania 238 391 km ²
	Slovakia 49 035 km ²
	Slovenia 20 273 km ²
	Spain 505 970 km ²
	Sweden 438 574 km ²
	United Kingdom 248 528 km ²

*Only the most representative products of each Member State's agricultural production are presented on this map.